

INSTANT URBAN

-testing new concepts for urban development

**TODAY MORE THAN 50% OF THE
WORLD'S POPULATION LIVE IN
AN URBAN CONTEXT**



**THE MODERNISTIC WAY TO
MAKE CITIES DEMANDS A HIGH
CONSUMPTION OF ENERGY**



**ENERGY FOR
TRANSPORTATION,
COOLING,
VENTILATION,
HEATING AND ELECTRICITY**

**THEREFORE THE DEMAND
FOR NEW SUSTAINABLE
SOLUTIONS IS
INCREASING**



**THEREFORE WE NEED TO
DEVELOP NEW CONCEPTS
FOR URBAN LANDSCAPES**

**INSTEAD OF SEPERATING
HOMES, WORK, CULTURE,
SHOPPING ETC.
WE SHOULD DEVELOP
URBAN CONCEPTS WITH A
HIGH PHYSICAL AND
FUNCTIONAL DENSITY**



**WE SHOULD DEVELOP URBAN
CONCEPTS THAT MAKE THE
CITY INSTANTLY ENJOYABLE
AND STIMULATING**

**A CITY WITH HIGH PHYSICAL
AND FUNCTIONAL DENSITY**

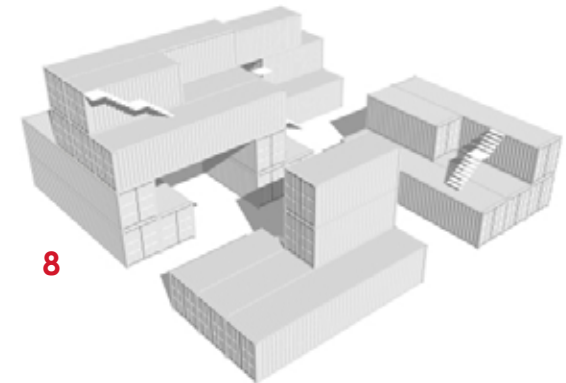
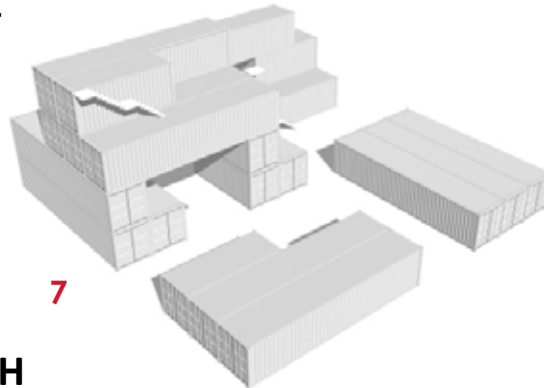
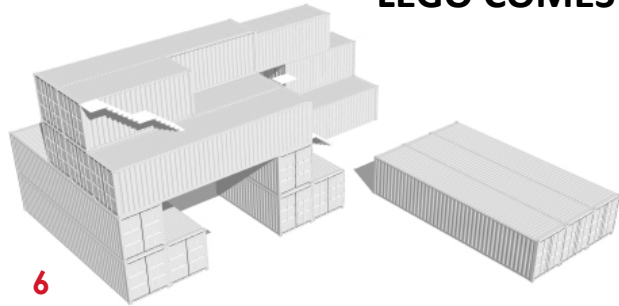
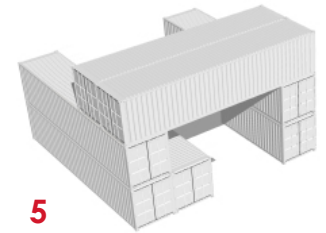
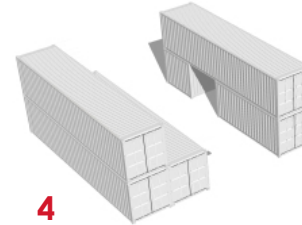
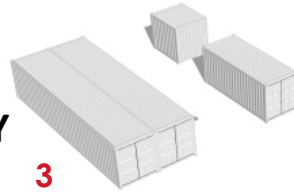
**URBAN PLANNING IS LIKE FORESTRY
- IT'S THE NEXT GENERATIONS WHO
BENEFIT FROM OUR INITIATIVES**

HOW TO MAKE A TEST CITY?

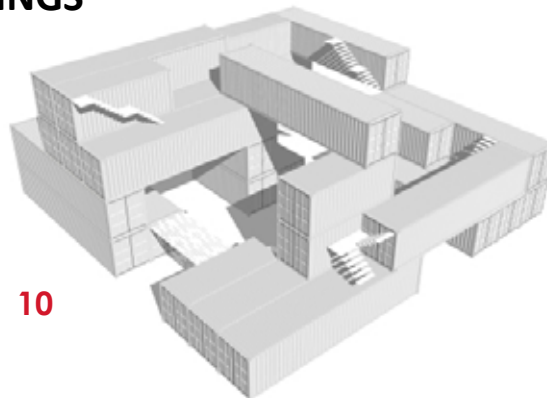
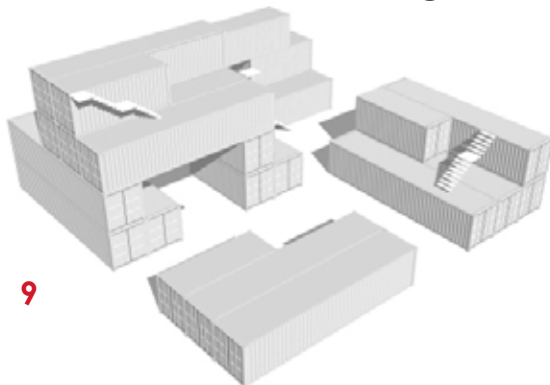




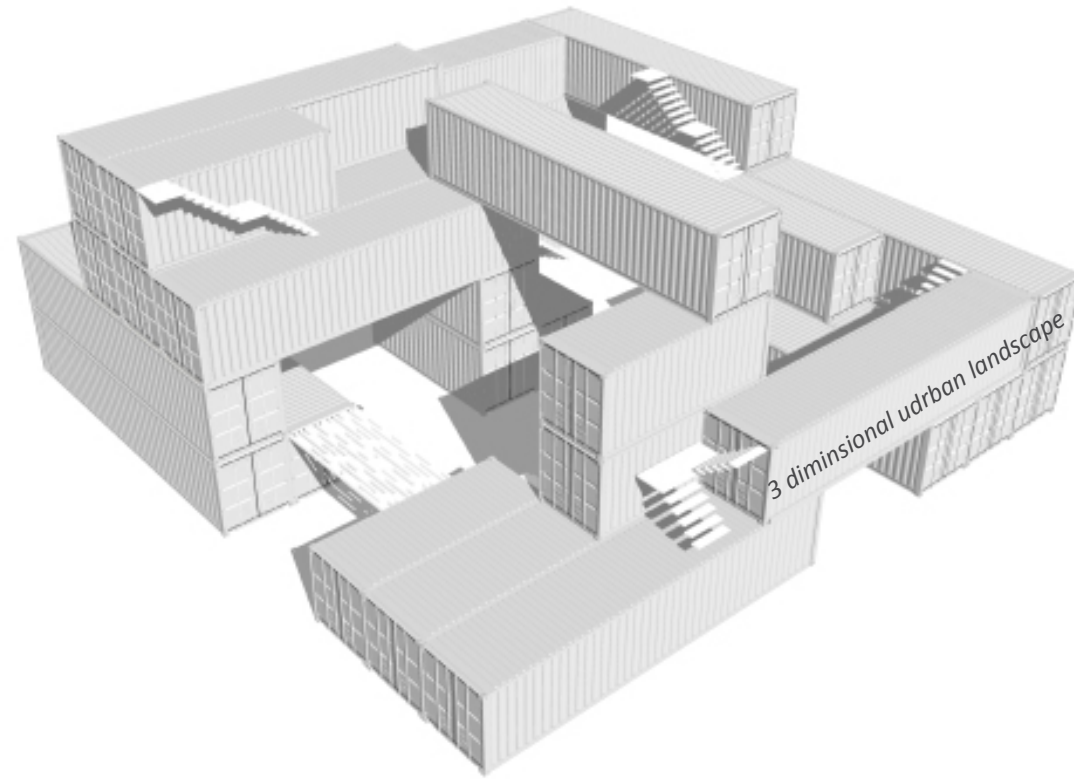
LEGO IS A BUILDING SYSTEM WHERE EACH PART FITS IN TO EVERY OTHER. ONE SINGLE PART MAKES NO SENSE. IT'S ONLY WHEN THEY ARE PUT TOGETHER LEGO COMES ALIVE



IT'S THE SAME WITH PEOPLE AND BUILDINGS



- 1) IU CARLSBERG**
- 2) NGO VILLAGE FOR COP 15**
- 3) HOMELESSHOME**



3 dimensional urban landscape

01 IU CARLSBERG

CIC COPENHAGEN INNOVATION CLUSTER

CIC VILLAGE



Open Air Galleri: åben kunststilling for installationskunst, fotokunst o.l.
ContainArt: kunstner får stillet x-antal containere til rådighed.
OpenAir cinema: VM, fodbold og andre større sportsbegivenheder, kulfilm, filmskolefilm.
CopenhagenFashion: en original cat-walk skabes af containere
Einisk marked: torvemarked, hver den 1. lørdag Kafferisteri
Cafeer, for områdets lejere. Fredagsbar. Et sted at samles "Elefantorvet".

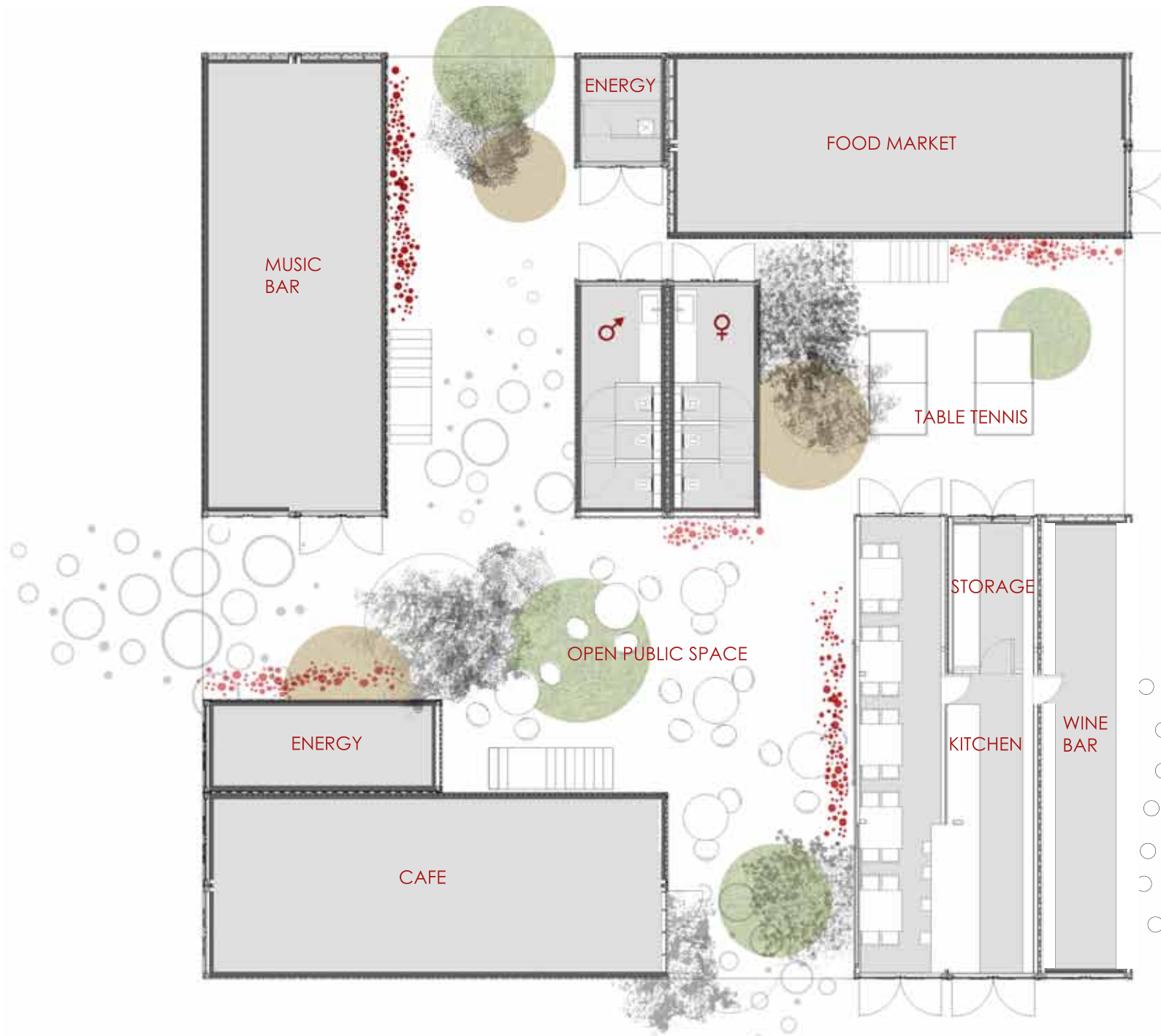
Street Bar, beerhalle: Carlsberg anklages for unfair konkurrence af værtshusejere
Street Dance: dansescene scenograferes af containere
Street Sport: fodbold, hockey, basket, klatring.
Pocket Park:
Micro Landbrug: De leverer varme til boliger, sammenhængende energisystemer
Mega Potteplanter: Skønne taghaver på containerne.
Klipperum: Små uafhængige filmskabere får billige lokaler
Øverum: Gør noget ved musikken!

Pladestudie: Digital redigering kræver meget lidt plads
Skriveværksted: manuskriptforfattere, forfattere, PR, journalister.
Studios: arkitekter, designere, mode, fotograf.
 Behov for værkstedsplads og billige og fleksible kvadratmeter.
Mindre værksteder: guldsmed, hattermager, tøjdesigner,....

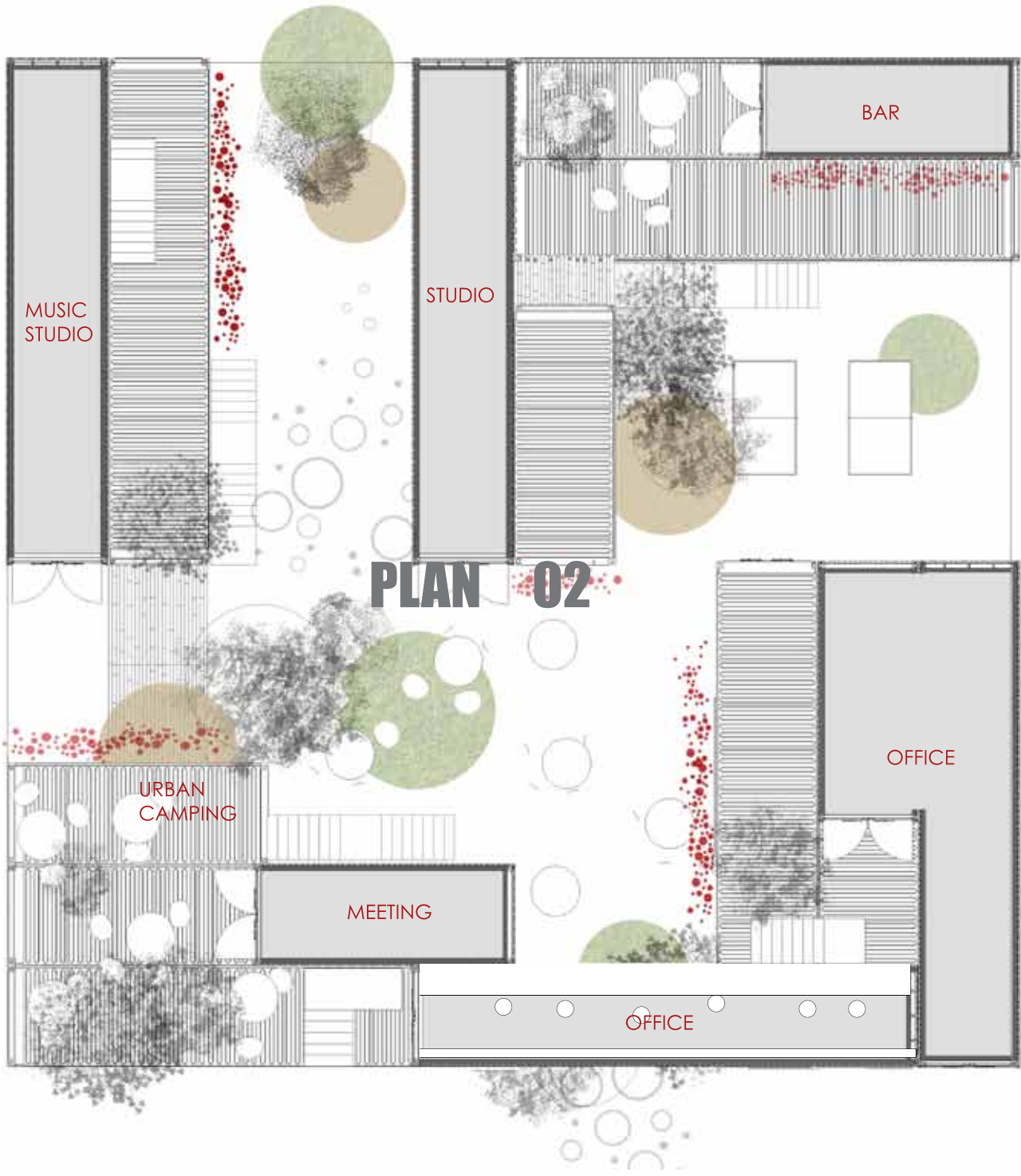
Afprøvning af ny GreenTech: minivindmøller, Termotekstiler, Energy Frames, nye varmluftssystemer, solceller og lagring af solenergi i batterier, VM

I den mest energieffektive container, VM med hold bestående af ingeniør og arkitektstuderende.

Sommerhotel: internationalt miljø
Boliger: 1:1 laboratorium for alternative boliger, f.eks. for Homeless.
UrbanCamping: sove på taget af containere. Sove ude om natten. Ny måde at besøge byen på.
Børnehaver for Frederiksberg Kommune med adgang fra Rønhøjs Alle. Strukturen kan tilpasses kommunens skiftende behov.



PLAN 00

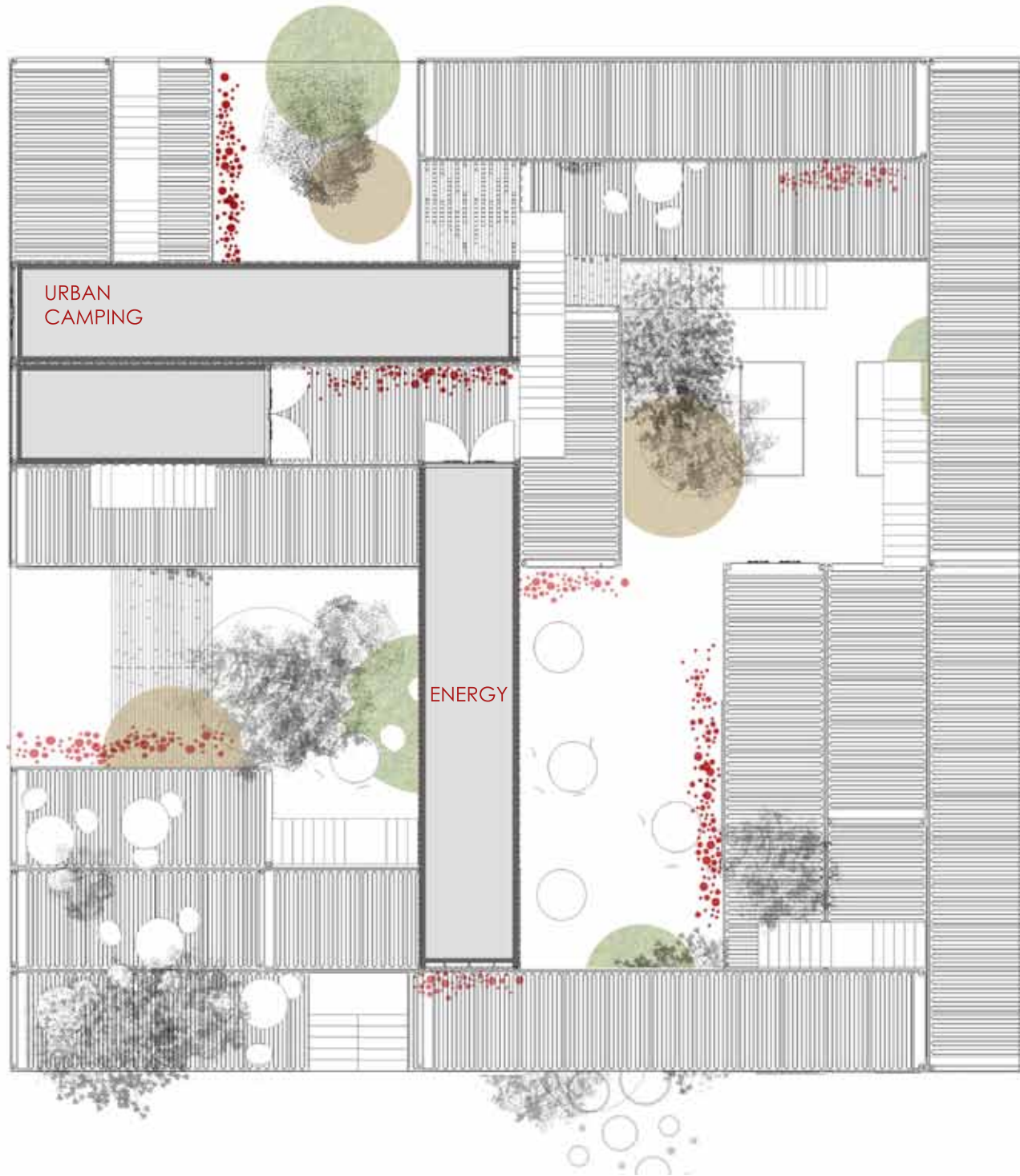


PLAN 02

PLAN 01



PLAN 02



PLAN 03

3D PARK



LEGO KINDERGARDEN



01 ART ZONE

1. Film: containerne danner ramme om fremsvisning af smalle film.
2. SoftSpace: afprøvning af nye arkitektoniske tekstiler.
3. Urban Art: Containerne anvendes som et lærred hvor moderne kunst bliver en integreret del af arkitekturen. Feks. Hanne Lindes værker
3. Arkitektur/Design: arkitekter og designere afprøver nye ideer i 1:1. Eksempelvis ny green-tech, arkitektoniske tekstiler, minimalboliger, Urban Farming og urbant møbeldesign
4. Arbejdende værksteder

ART ZONE

ny platform for kunstneriske udtryk

Vol. 1

2012





NGO VILLAGE FOR COP 15

**in between
containers**



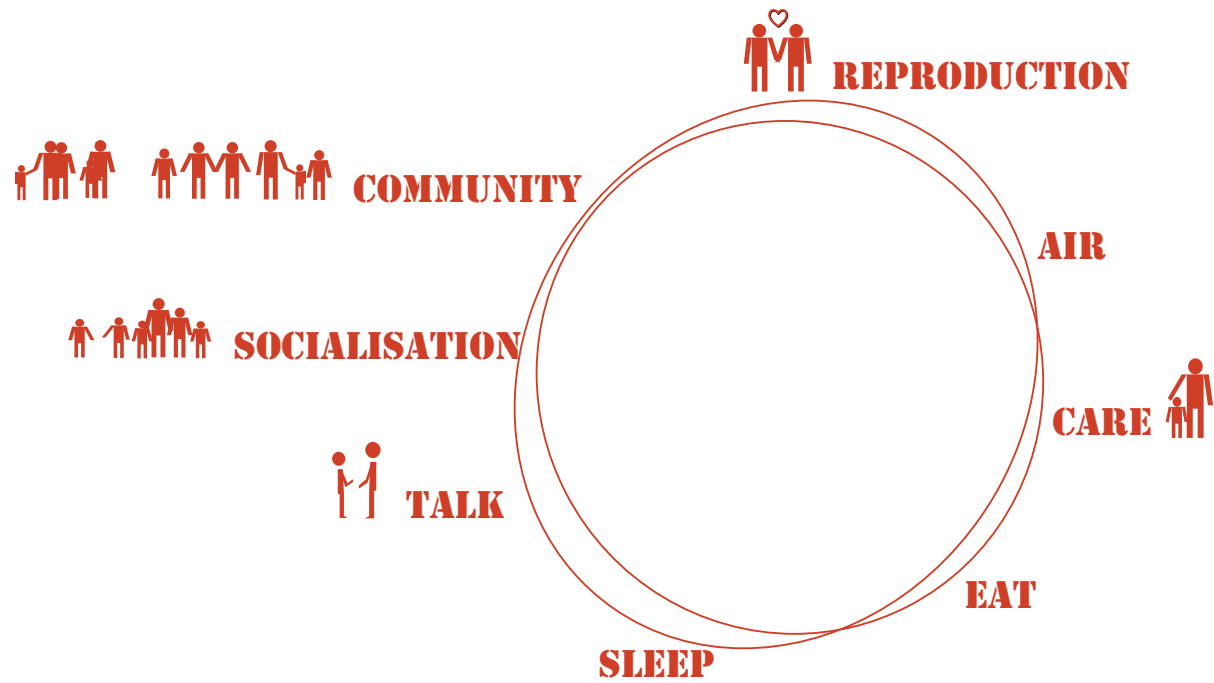


HOME LESS HOME



“.....every one have the right to a certain standard of living”

**For those who haven't,
- what can we, as architects, do for them?**



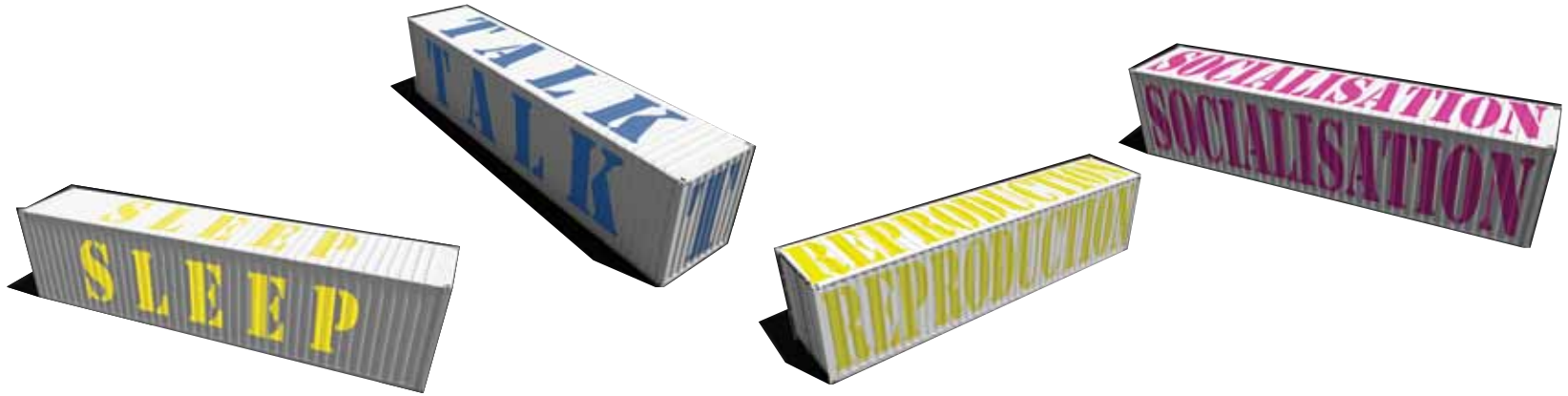
From birth to adult life we have the most basic needs in common. Homeless or not homeless.

- AIR
- CARE
- EAT
- SLEEP
- TALK
- SOCIALISATION
- COMMUNITY

We use these basic needs as architectural elements and create building environment that handle these needs on a limited space that increase density, and therefore develop the possibilities of communication.

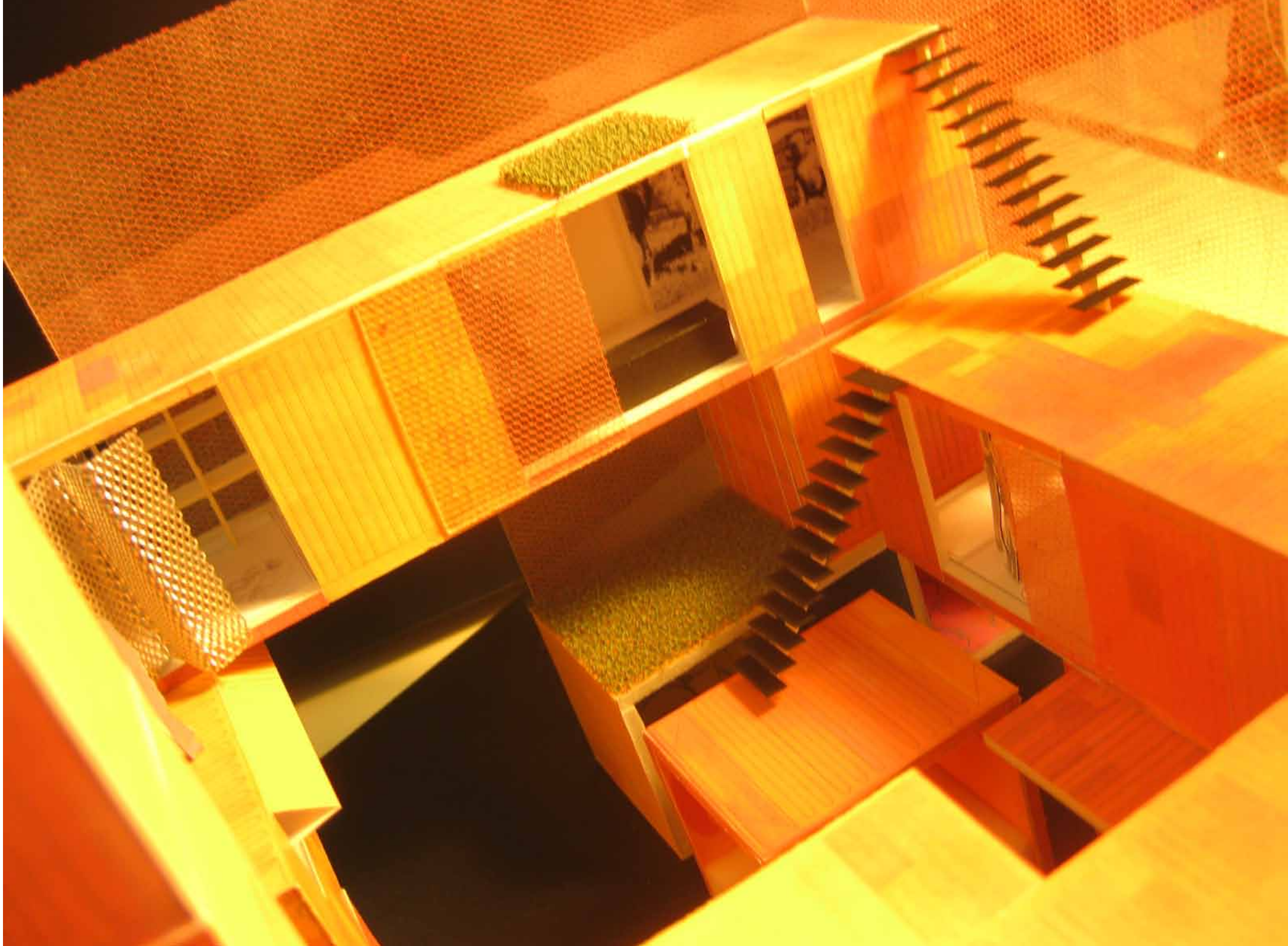
**BE CLOSE
- CLOSE TO LIFE**













PLAN 0

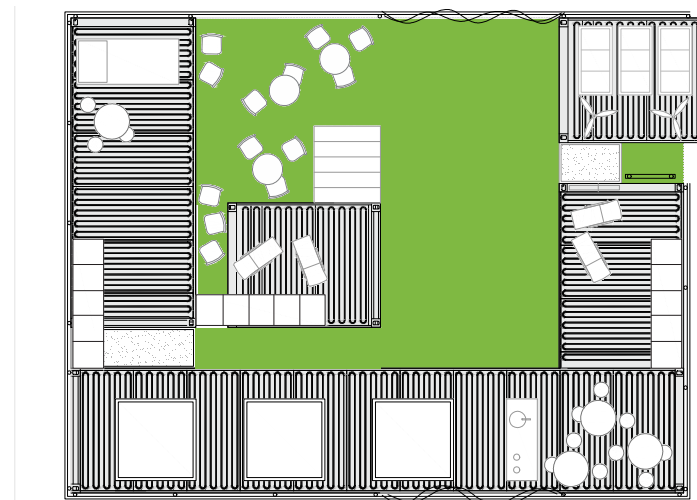


PLAN 1

Out-door home



PLAN 2



PLAN 3

MODULAR

One container is one big pixel.

One pixel do not create a meaningful picture.

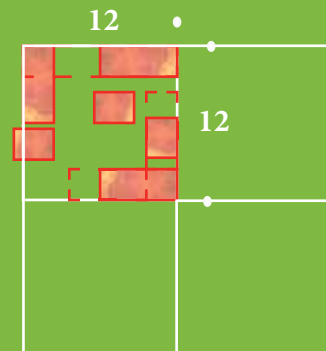
A lot of pixels together create the picture.

It take 12 meter by 12 meter and 12 container to create a meaningful picture.

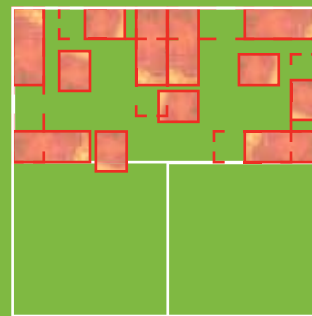
You can create new pictures by adding another 12x12 meter, and another, and another.....

Repetition increases the spatial complexity.

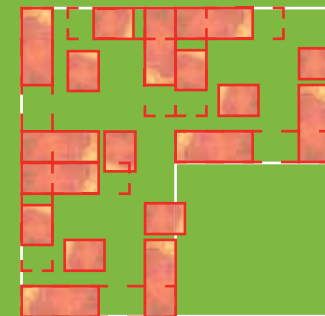
More repetitions - more variation.



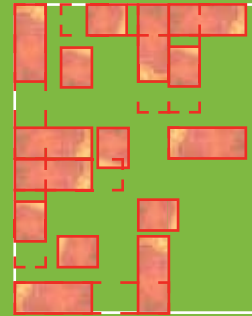
A



B



C



D

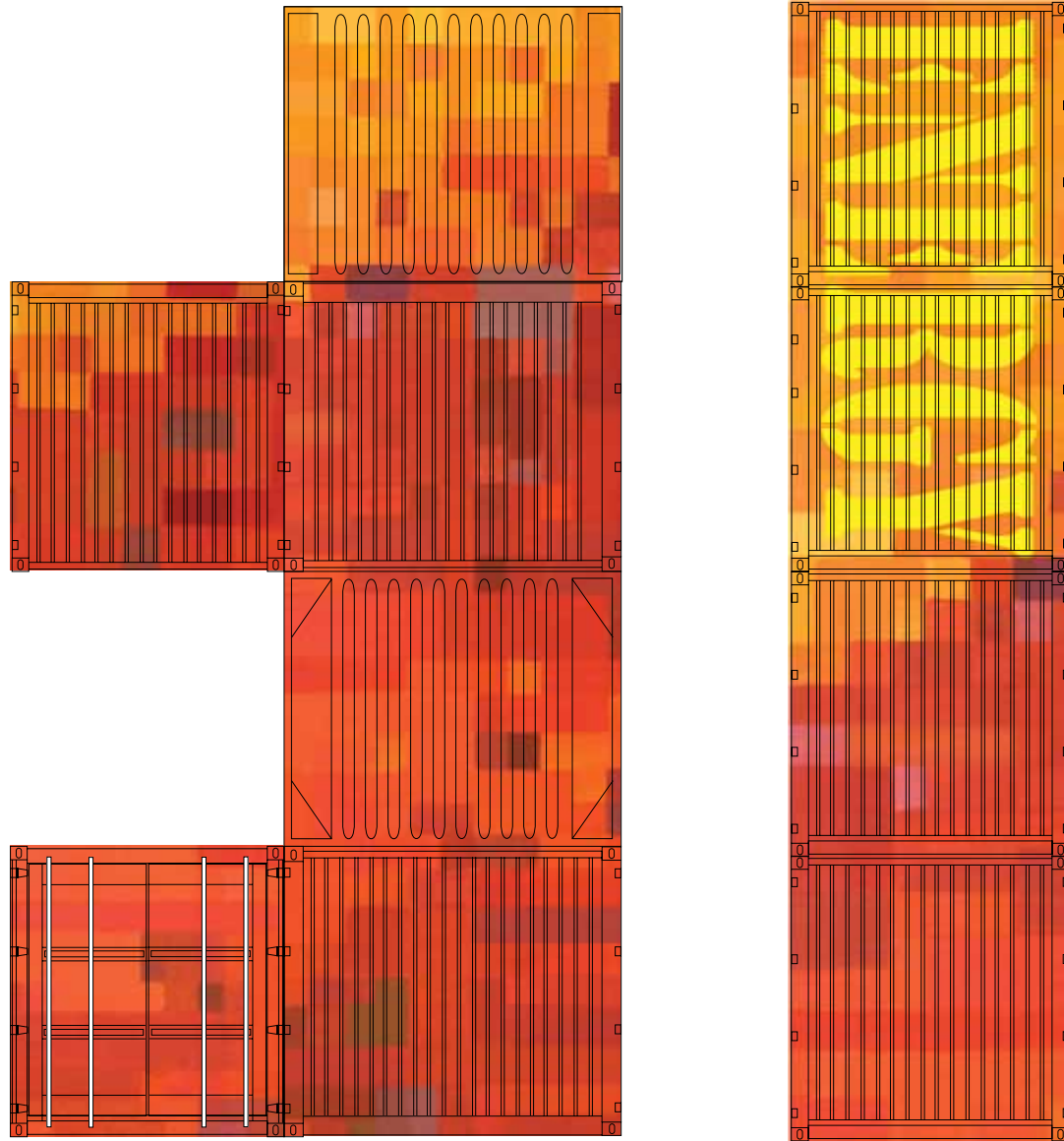


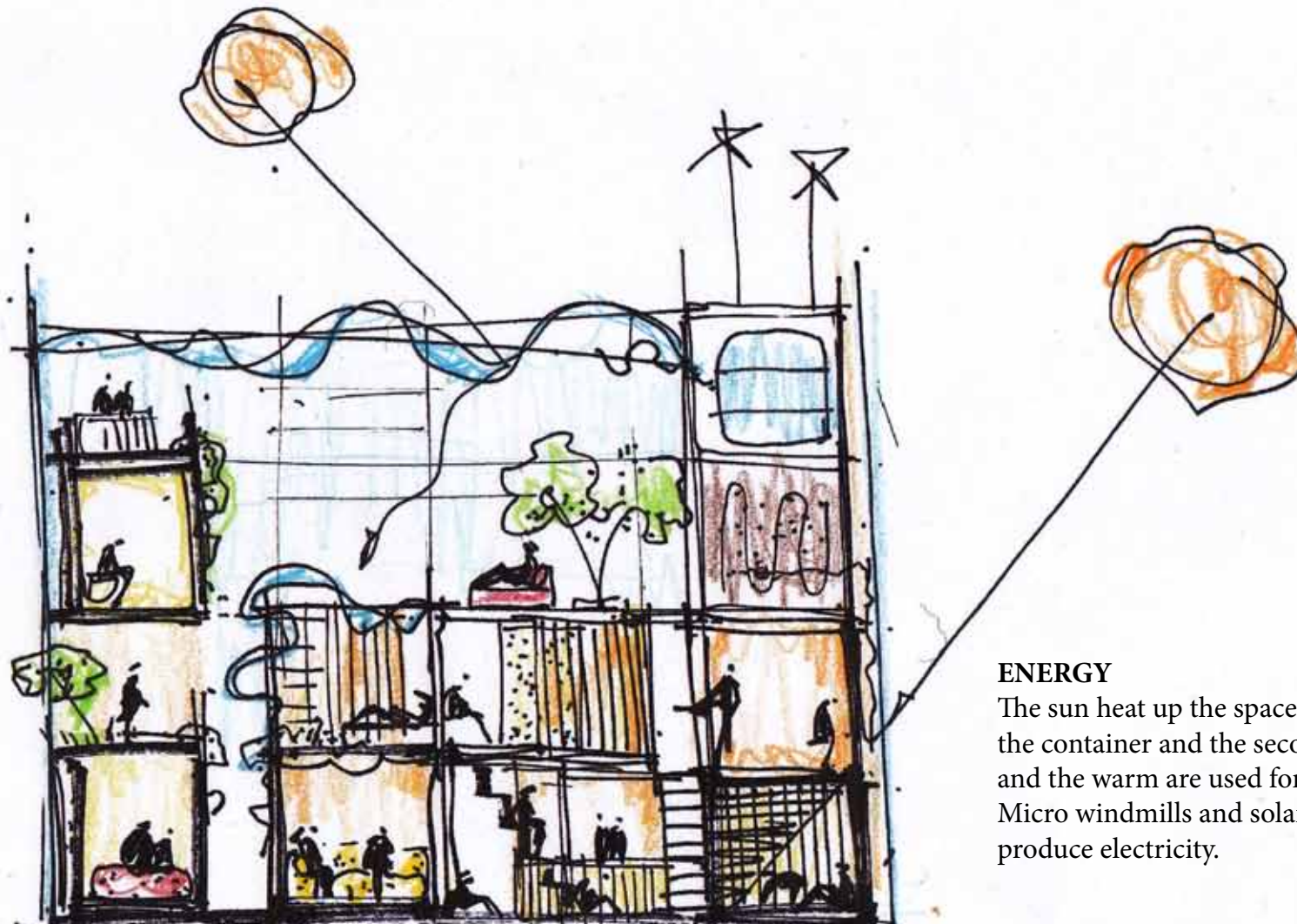
COLOURS

COLOURS

Big pixels of red and orange.
The container is one big pixel.
The colours and the container
together create a constantly
changing picture according
to numbers and sizes.

Colours can define space.
Colours can raise the temperature.
They can be used architectural.





ENERGY

The sun heat up the space between the container and the second skin and the warm are used for heating. Micro windmills and solarcells produce electricity.

**HOME LESS HOME
IS**

**ARCHITECTURAL QUALITY
IN A LIMITED SPACE
AND WITHIN A
LIMITED BUDGET**



SOCIAL AFFAIRS

During the exhibition period, we held a number of social activities:

- Opening
- Housewarming
- Midsummer celebration for homeless people
- Project Outside distribution of food
- Children and architecture

The containers and the space between the containers have a great social potential for children, homeless people, locals and the rest. Restaurant FAMO generously cooked for all the events.

As an 1:1 experiment we made the final decisions on site when it comes to:

- Mobile modularity
- Cutting
- Colours







THE SITE

At one of the busiest corners in Copenhagen
we created a new temporary space

A site which was not a site became a site

A peaceful oasis for homeless people

**HOME TO GO!
TO GO HOME?**





**MIDSUMMER CELEBRATION
FOR
HOMELESS PEOPLE**





CHILDREN AND ARCHITECTURE

A school class visit the project to learn about architecture, and to have a home or not to have a home, and how to play with very big LEGO bricks. The visit where arranged by Den Frie Centre of Contemporary Art



ADULT AND ARCHITECTURE

The concept can be developed into a system that is adaptable to different needs of the end-user. It can be a joyful play with very big LEGO bricks



INSTANT ARCHITECTURE



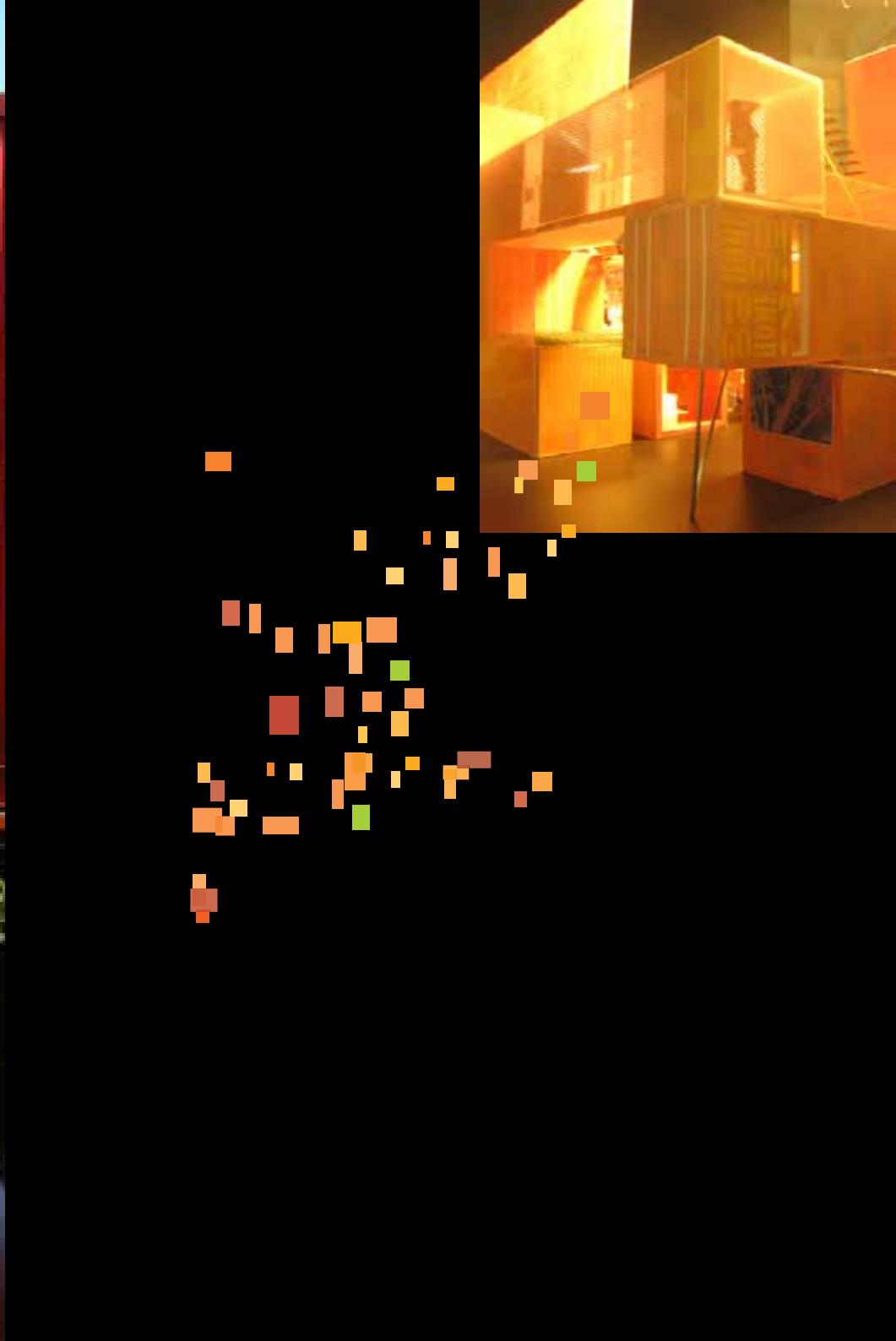
THE GARDEN

The main focus is the social space between the containers. In collaboration with the talented landscape architects, Bang og Linnet Landskab, we developed a moveable garden that create an intense and joyful atmosphere between the containers

TALK

AIR

SOCIALISATION







SUN

WARM



GROWTH

GREEN



SMELL

Some plants are desired.
Other undesirable.
They are defined as weeds.

But the so-called weeds
have often a strong will for
survival. And many weed
plants are used as
medicine.

So what is undesirable do
create value and thereby
the plants obtains a new
beauty.

Whether something is
defined as weed or not,
is determined by the eyes
that see.

Beautiful weeds are printed
on the containers second-
skin. They are mixed with
real plants resulting in a
game between the artificial
and the real.

HomeLessHome turns into
a beautiful bouquet of
flowers placed in the center
of the city.

- Who can say no to a
beautiful bouquet of
flowers?



COPENHAGEN DESIGNWEEK



A BEAUTIFUL BOUQUET OF FLOWERS

HomeLessHome turns into a beautiful bouquet of flowers placed in the center of the city.
Who can say no to a beautiful bouquet of flowers?





HOME LESS H





DECO MAGAZINE

published in

Taiwan
China
HongKong

ARCHITECTURAL QUALITY
IN A LIMITED SPACE
AND WITHIN A
LIMITED BUDGET

使用貨櫃箱作為結構並不是一個新鮮的想法，從70年代就開始了。但這次構想創新之處是在於將貨櫃屋設計成可運輸的單元，並結合成建築物。於是這使得建築更為具有機動性，同時卻也是更堅固的。一個可四處旅遊的結構，由六個貨櫃所組成的架構展出於展示空間中，展現設計在「think human」的口號下，同時這只是哥本哈根設計週的一個貨櫃屋建築的例子。建築師說：「我們主要的目的是要能耐久性以及永續性。我們在設計上只採用耐久性的方式，而在這個設計裡呈現的即是有如一把通往目的地的鑰匙。我們的貨櫃屋裝置可以移動及旅遊至新的地方。」

這個為無家可歸的人所創造的房子是6x6平方公尺大小，展出於哥本哈根設計週。建築師對以貨櫃箱作為建造構成著迷了好幾年，這次的挑戰則是要試試看建築可以在這麼小的地方、這麼少的預算，被創造出多少的空間。這次的設計是可以容納五個人，但卻也可以很容易地增加，這個貨櫃屋居家有著許多的趣味，就像一種成年人的大型樂高玩具般。而且貨櫃屋可以說是一種全球的潮流，這也讓它成為一種有趣的廉價住宅的再思考方式。Homelesshome是一種建築上的實驗，但建築師將會想要看見貨櫃屋建築真實地被使用，包括無家可歸的人以及其它的人。它只是一個架構，因此可以使用任何材料鋼鐵、木材、可回收的麻類或玻璃來作為立面，你可以任意裝飾你自己的住家立面，以自己喜愛的材質。



成人樂高新形式居家 HomeLessHome

erik juul architects提出了便宜、方便、穩固、有彈性、便宜、省能，能持續使用、可移動的貨櫃箱新居家形式，為「人性化考量」創造了新生活思維。這是為無家可歸的人所設計的家，同時也是哥本哈根設計週展示的核心。

WHERE TO GO?

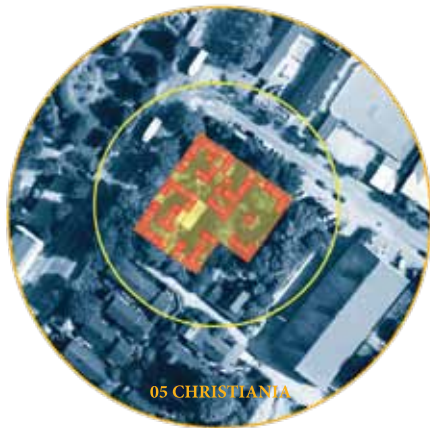
Cities have a lot of different temporary spaces.
They are waiting for permanent buildings or functions.
Could they be activated meanwhile?

A modular and moveable architectural concept
could activate these places.
They could create urbanism instantly.

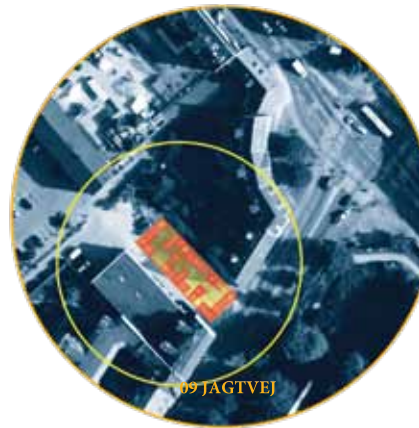
It could be A Home To Go!

We picked 9 different places in Copenhagen.
Where could the next Instant Urbanism project occur?

WHERE TO GO?



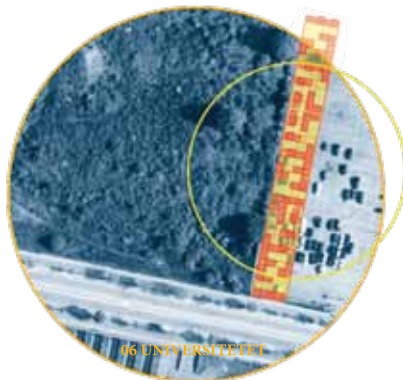
CHRISTIANA



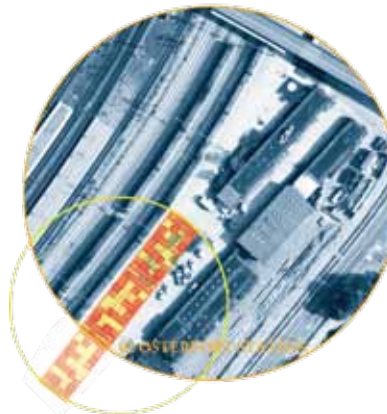
JAGTVEJ 69



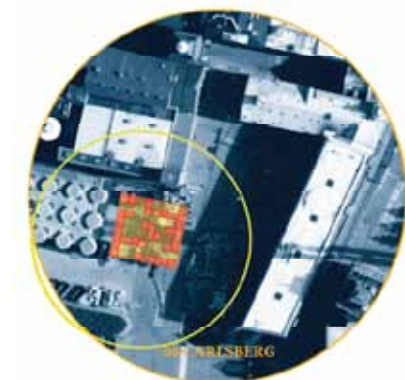
DEN FRIE



UNIVERSITET, NJALSGADE



ØSTERPORT 2



CARLSBERG



HOME TO GO! GO TO HOME?

A truck, a man and a few hours later the home becomes homeless. And the parkinglot becomes a parkinglot again.

See you another place, and a another time!

